

Game of Thrones

Suite - 2nds

Chris Bollinger & Mark Mullaney

solo 1sts - andante - waltz

Musical notation for the first system, labeled "solo 1sts - andante - waltz". It features a treble clef, a key signature of two sharps (F# and C#), and a 3/8 time signature. The notation consists of a single melodic line with a series of eighth notes and quarter notes, starting with a repeat sign.

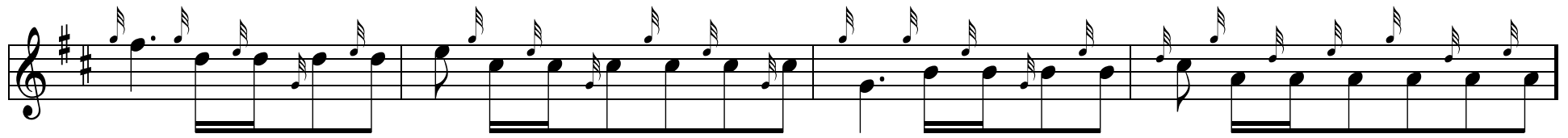
a due

Musical notation for the second system, labeled "a due". It features a treble clef, a key signature of two sharps, and a 3/8 time signature. The notation consists of a single melodic line with a series of eighth notes and quarter notes, starting with a repeat sign.

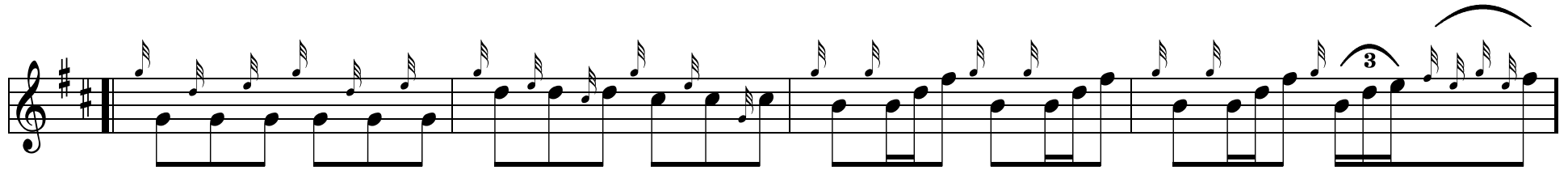
Musical notation for the third system, labeled "a due". It features a treble clef, a key signature of two sharps, and a 3/8 time signature. The notation consists of a single melodic line with a series of eighth notes and quarter notes, ending with a repeat sign.

Musical notation for the fourth system, labeled "a due". It features a treble clef, a key signature of two sharps, and a 3/8 time signature. The notation consists of a single melodic line with a series of eighth notes and quarter notes.

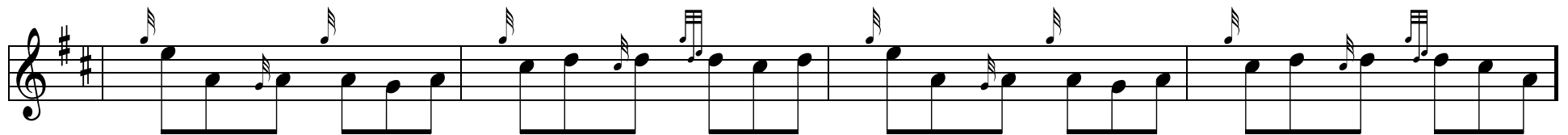
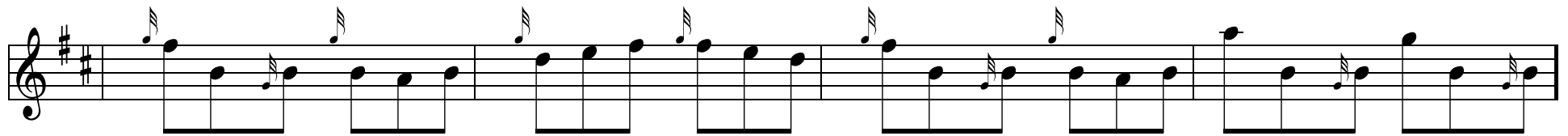
Musical notation for the fifth system, labeled "a due". It features a treble clef, a key signature of two sharps, and a 3/8 time signature. The notation consists of a single melodic line with a series of eighth notes and quarter notes.



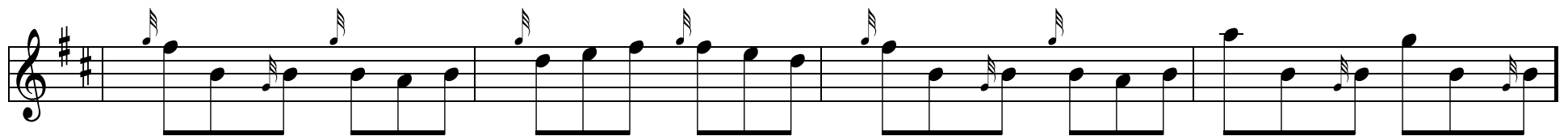
rit.



solo 1sts - allegro - jig



a due



The image shows a musical score for a piece in treble clef with a key signature of two sharps (F# and C#). The score is divided into six staves. The first five staves are in 4/4 time, and the sixth staff is in 12/8 time. The music consists of eighth and quarter notes, often beamed together, and includes some slurs and accents. The notation is clean and professional, typical of a composer's draft or a published score.

